

The Western Orbital

Initial ideas for new bus provision on or near to the M11

Bob Menzies
Service Director, Strategy & Development
Ashley Heller
Team Leader, Public Transport Project



The Greater Cambridge City Deal
working in partnership:



Our Presentation

- The City Deal
- Strategic Context
- Other projects
- Consultation
- Process
- Next Steps

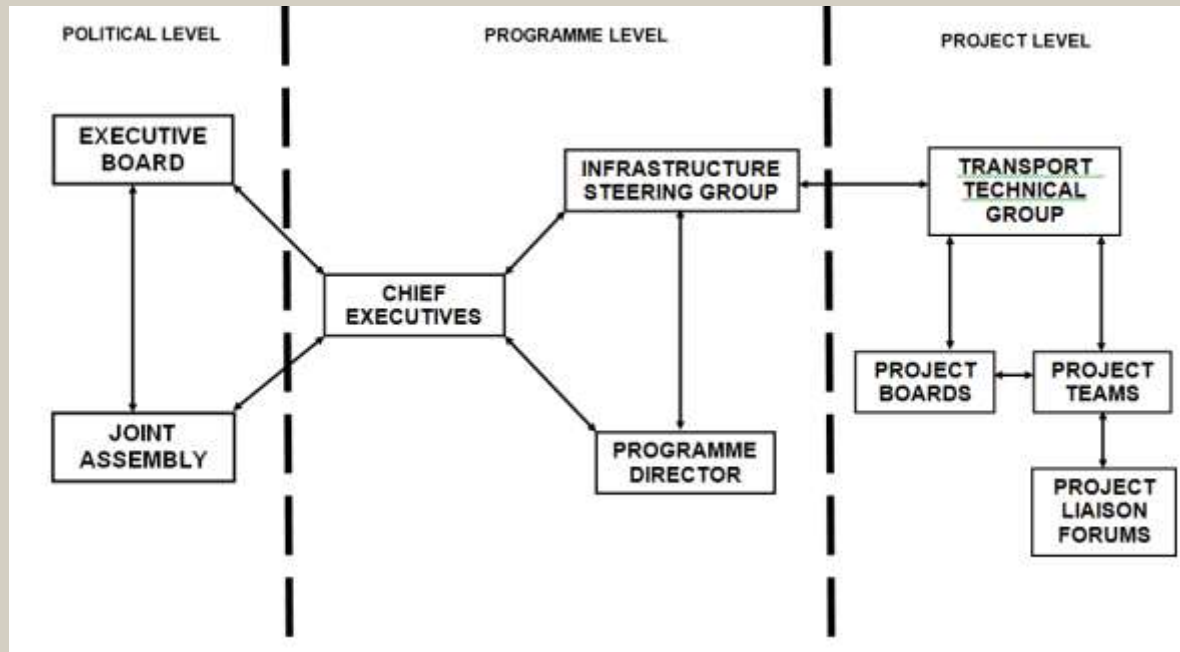
Background



City Deal

- Up to £500m for transport infrastructure, payable in 3 tranches
- Tranche 1: £100m 2015-20
- **Tranche 2: £200m 2020-25**
- Tranche 3: £200m 2025+
- Tranches 2 and 3 depend on independent economic assessments
- Aligns with other local capital investment plans to support growth

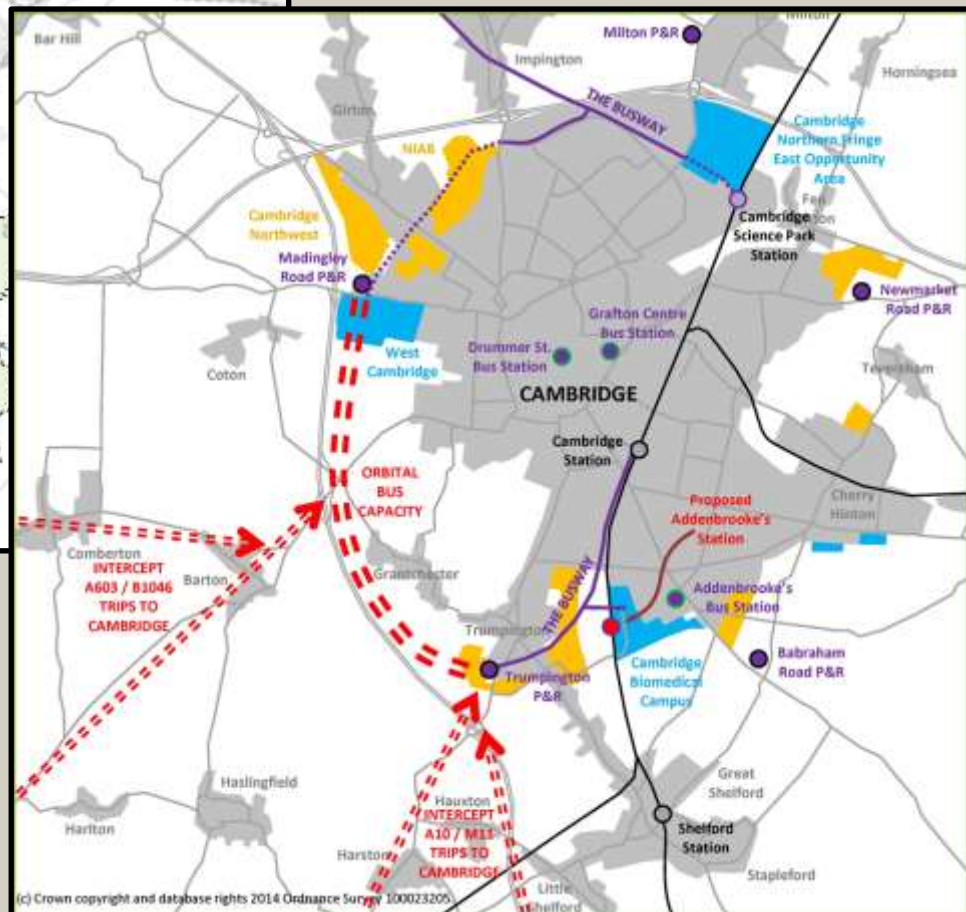
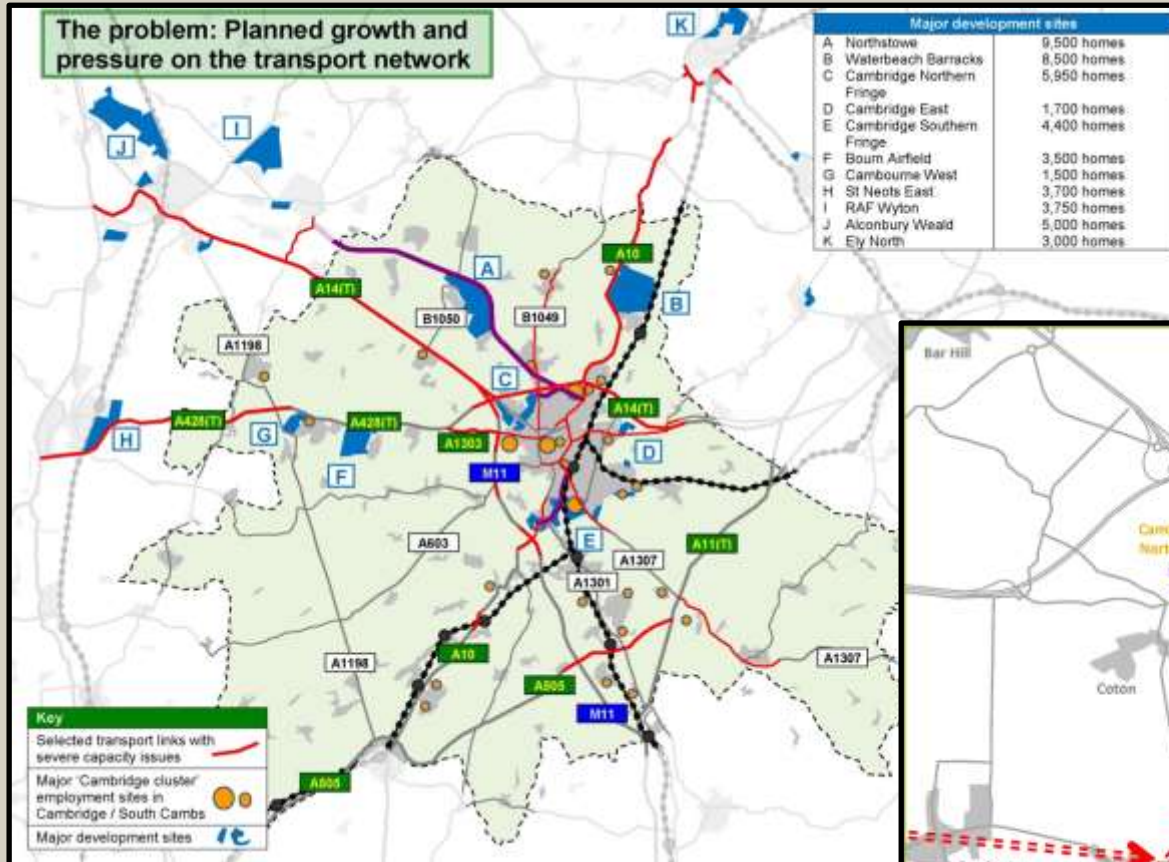
City Deal Structure



The Greater Cambridge City Deal
working in partnership:



Local Transport Plan



Specific links with A428 scheme

The Western Orbital has a number of links with other transport projects being taken forward, some of which are within the City Deal:

- All options could work with A428 concepts
- A428 concepts currently being refined with recommended option in September Both schemes are now governed jointly through Project Board
- Western Orbital emerging ideas will need to be considered as part of A428 ongoing technical work
- Aim to ensure that both schemes are considered holistically

Other Connected City Deal Projects

The Western Orbital has a number of links with other transport projects being taken forward, some of which are within the City Deal:

- **City Centre Access Study** – travel demand management could impact demand on orbital routes
- **A1307 Haverhill Corridor** – need to consider wider bus management and capacity issues at Addenbrooke's and ensure effective measures are put in place
- **J11** – separate study of quick wins around J11 could impact the specific alignment of the Western Orbital.

Other Connected City Deal Projects

J11 – separate study of quick wins around J11 could impact the specific alignment of the Western Orbital.



Issues and Opportunities

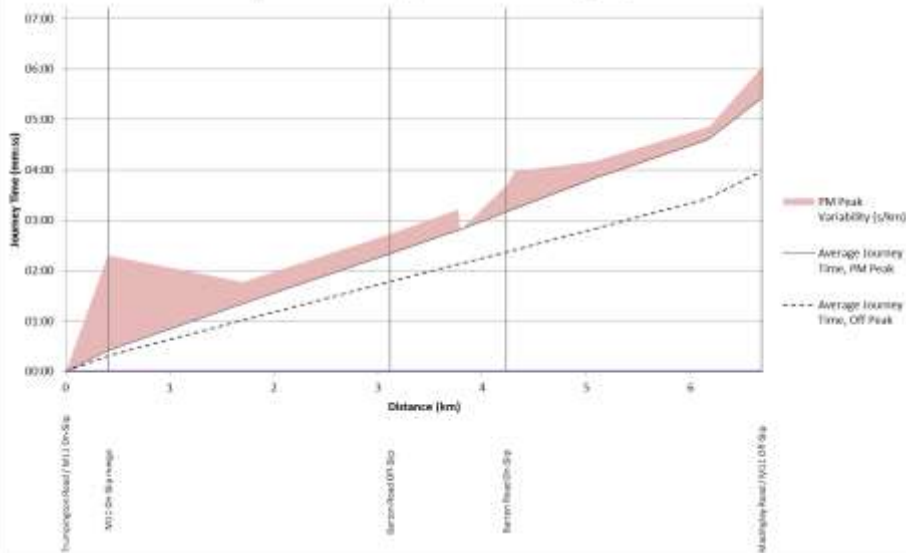


Current problems on route

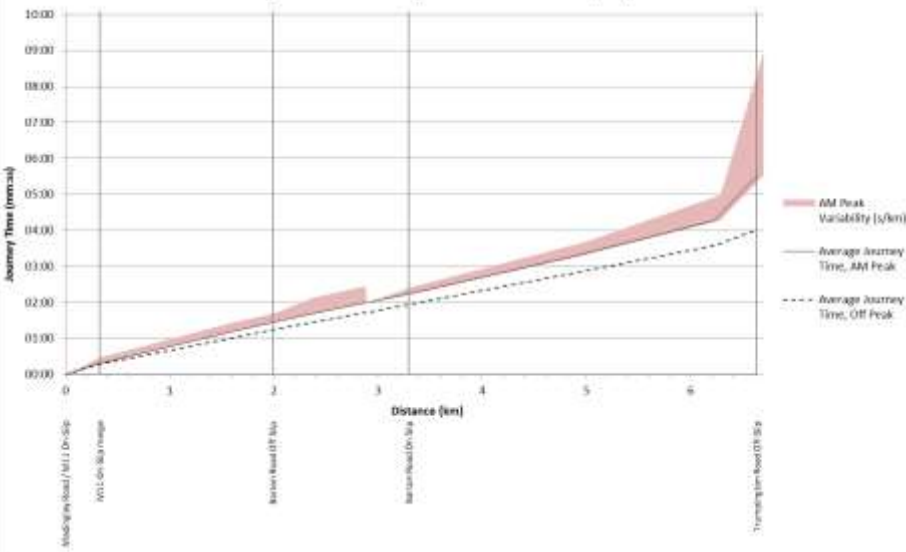
Journey time variability along radial routes, both east and west of the M11 particularly at:

- **A1309** – Trumpington Road;
- **A10** – Foxton Level Crossing;
- **A603** – Barton Road/Grange Road / Grantchester Street; and
- M11 – Barton Road Junction.
- Congestion on **M11** on and off-slip road at **Junction 11 & 13**
- low traffic speeds in the morning peak, particularly approaching / at junctions of the M11

Journey Time Variability for M11 Mainline, NB, PM Peak



Journey Time Variability for M11 Mainline, SB, AM Peak



Current problems on route



Future problems on route



Future Strategic Impacts

Apart from the development in and around Cambridge, the M11 corridor could become busier as a result of the following strategic changes:

- **A14 upgrade** - *could result in more traffic using M11 north to south*
- **A428 to A1 upgrade** – *could result in more traffic travelling east to west and on to M11*
- **Cambridge Travel to Work Area changes**– *increasing evidence of more people to travelling to Cambridge from further south along M11 corridor*
- **Further changes to the M11 itself** – *currently Highways England plan to introduce managed motorway (electronic signage) but in the future an increase in capacity cannot be ruled out*

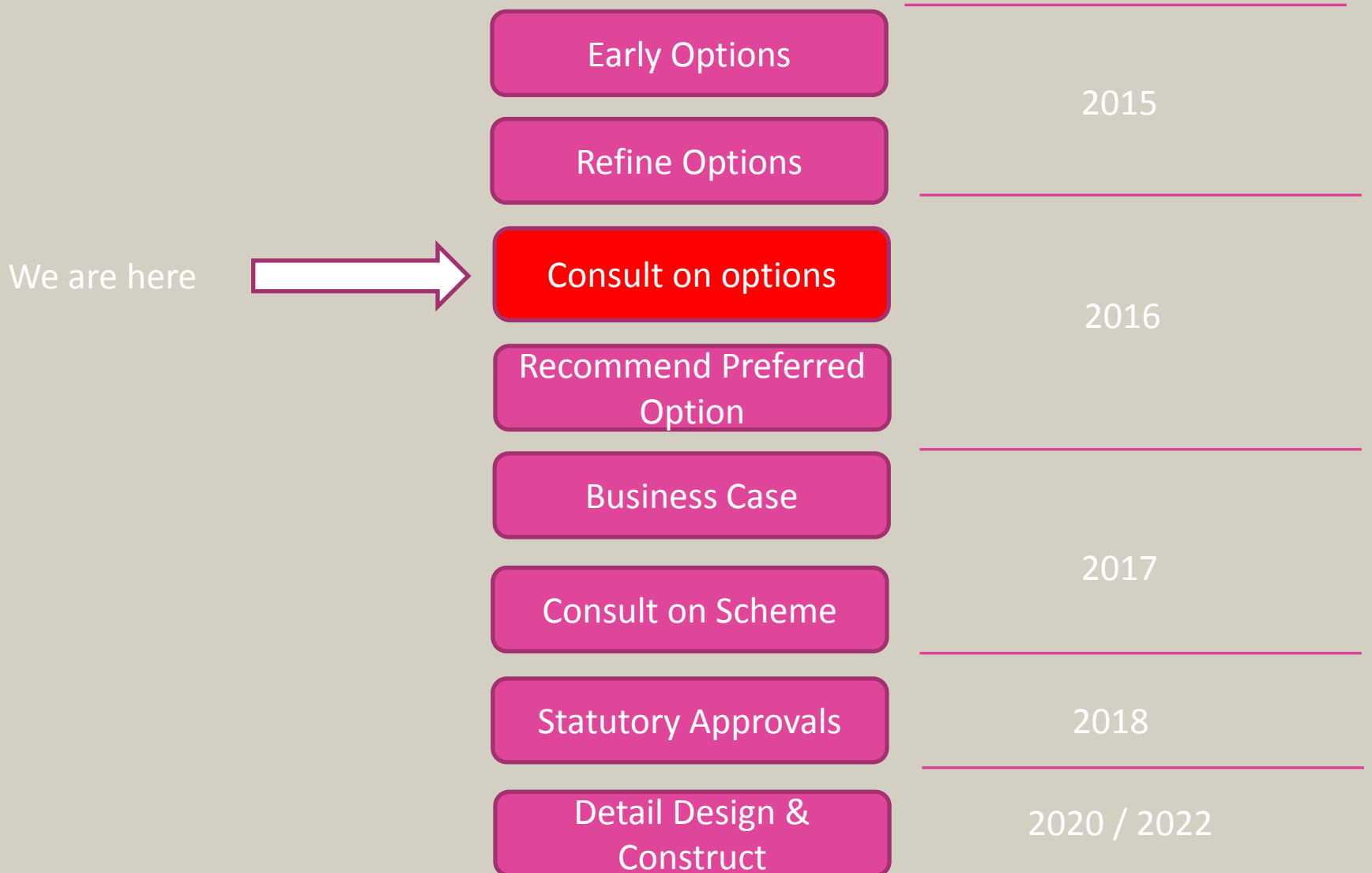
Project Timelines



5 key project decisions - City Deal Board

- 1 – Project inception
- 2 – Agree to consult on high level options
- 3 – Agree to a ‘recommended option’ on the basis of ‘outline business cases’,
- 4 – Agree further consultation followed by full business case and statutory approvals
- 5 – Agree to construct a final scheme that has received all statutory approvals

Western Orbital



How do A428 & Western Orbital Timelines Fit Together?

Comparative Timelines		
	A428 / A1303	Western Orbital
Consult on early Ideas	October 2015	February 2016
Report on Consultation	March 2016	September 2016
Propose recommended option	September 2016	December 2016
Full Business Case	September 2016 – April 2017	December 2016 – July 2017
Seek agreements to obtain necessary consents to build scheme	May 2017	September 2017
Obtain Statutory Approvals	2017 – 2018	2018
Obtain permission to construct the final scheme	June 2018	June 2018
Construct the final scheme	Sept 2018 – Sept 2020	Sept 2020 – Sept 2022

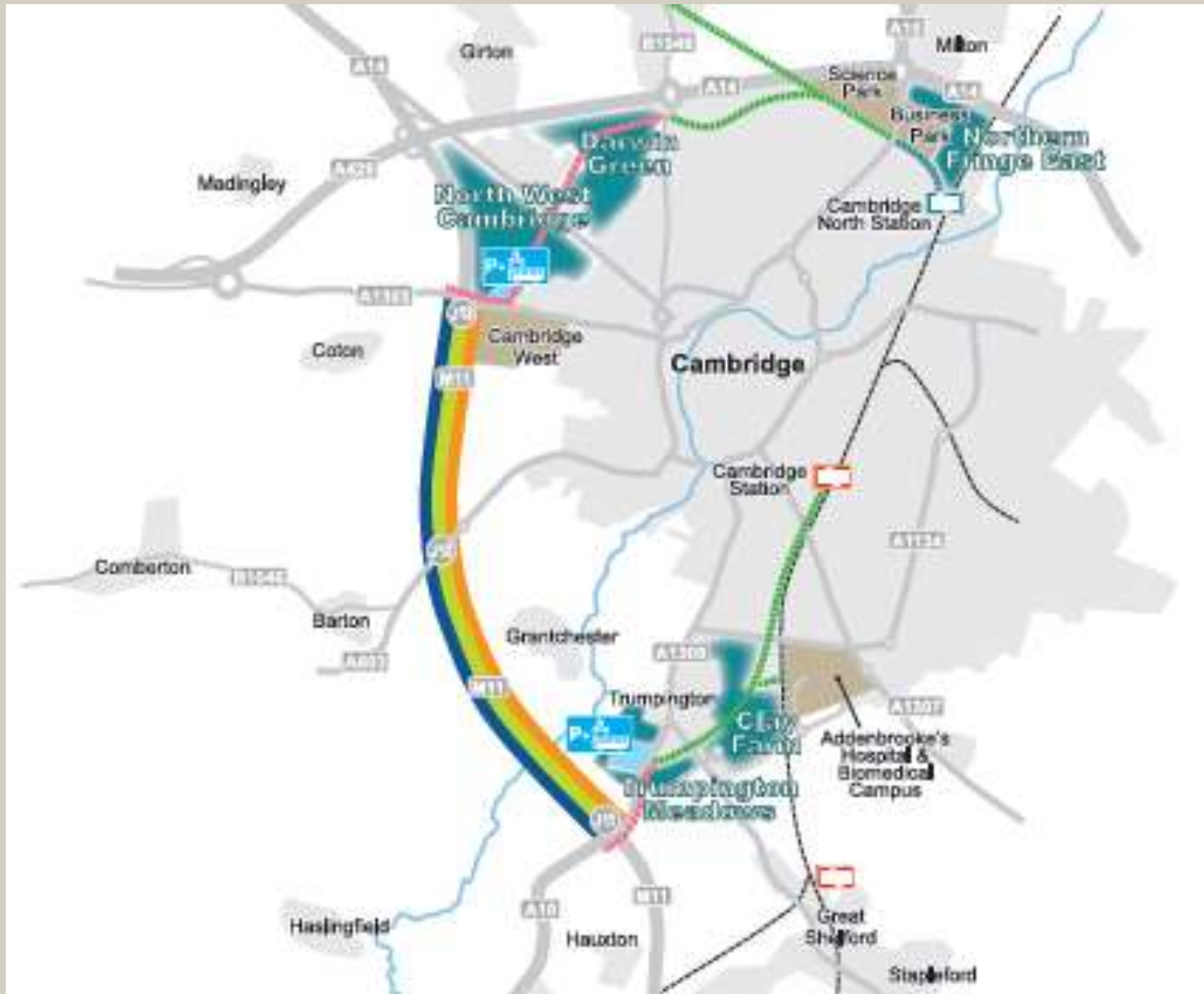
Current Consultation



Consultation Objectives

- Get public view on the concept of scheme
- Get view on initial ideas
- Get specific feedback on additional constraints and issues along the corridor
- Increase public awareness of scheme

Alignment



Option A & B



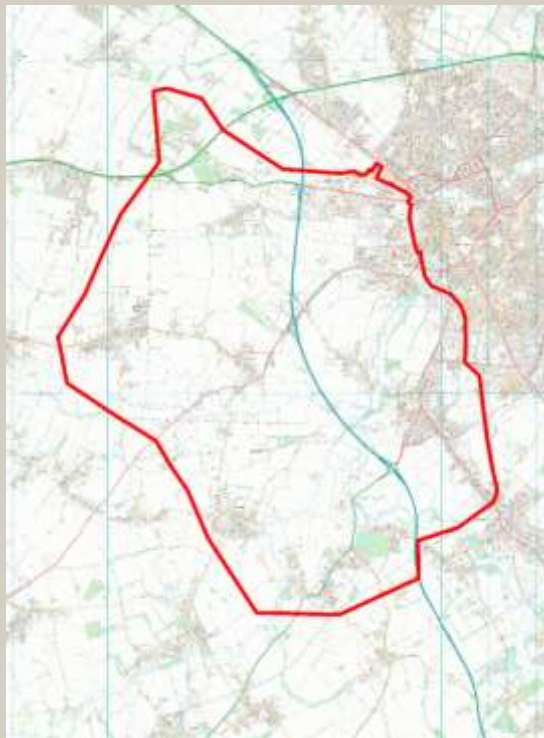
Option C & D



Consultation Feb & March

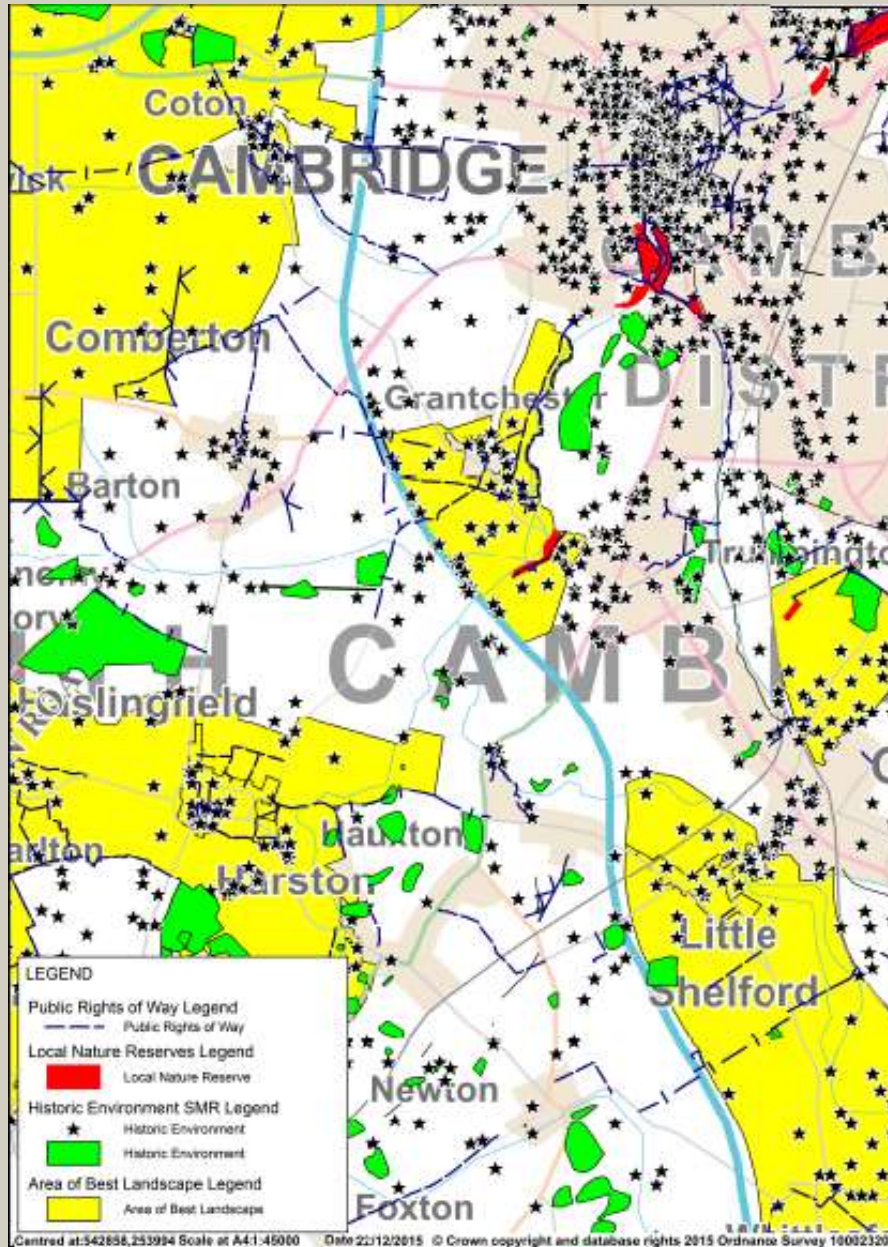


- Meetings/briefings Council members & stakeholder group
- Discussions with land-owners
- Meetings with Project Board
- Residents associations

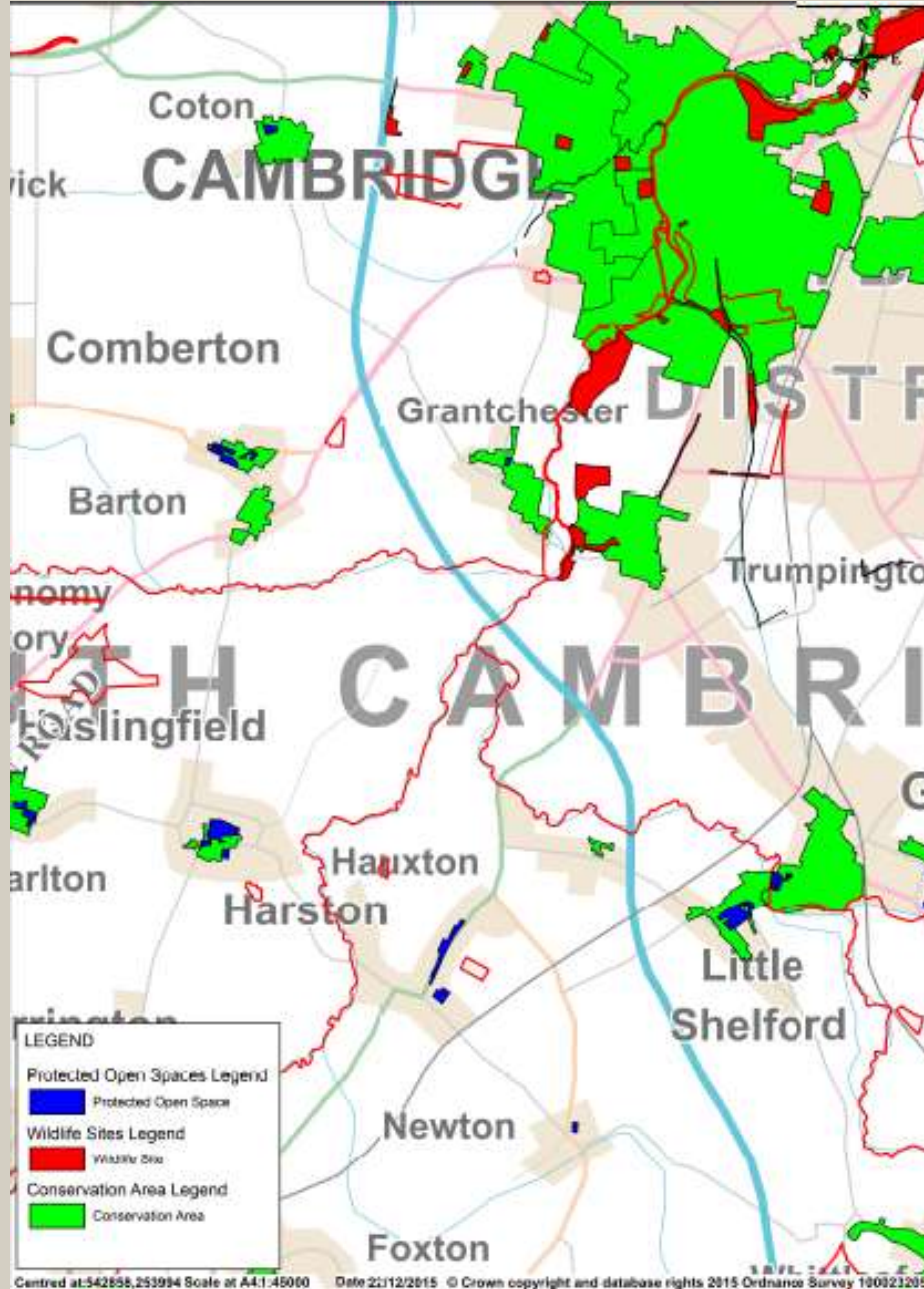


- Direct mail/email,
 - advertising,
 - a press release
 - Facebook / Twitter
-
- Public meetings and exhibitions
 - Displays in public places, Libraries, existing P&R sites etc.

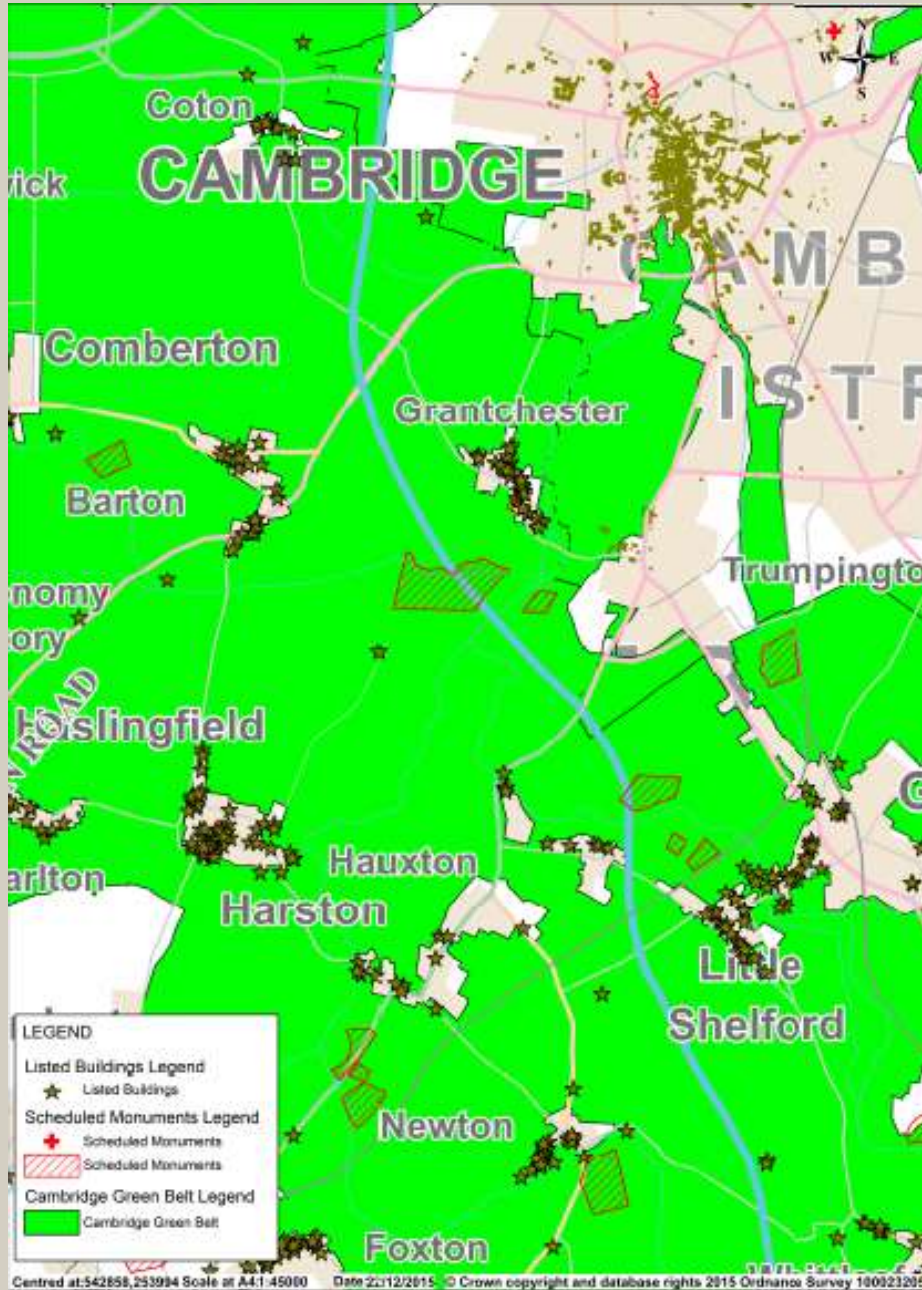
Environmental Considerations



Environmental Considerations



Environmental Considerations



Exhibitions

Location	Date	Time	Address
Newnham	Mon 22 February 2016	17.00-20.00	West Road Concert Hall, 11 West Road, Cambridge, CB3 9DP
Harston	Tue 23 February 2016	18.30-20.30	Harston Village Hall, 20 High Street, Harston, CB22 7PX
Grantchester	Wed 24 February 2016	16.30-20.00	The Reading Room, High Street, Grantchester, CB3 9NF
Comberton	Wed 2 March 2016	18.30-20.30	Comberton Village Hall, Green End Road, Comberton, CB23 7DY
Coton	Thu 3 March 2016	18.00-20.00	Coton Village Hall, 56 High Street, Coton, CB23 7PL
Cambridge	Tue 8 March 2016	17.00-20.00	Lucy Cavendish College, Lady Margaret Road, Cambridge, CB3 0BU
Barton	Wed 9 March 2016	18.30-20.30	Barton Primary School, School Lane, Barton, CB23 7BD
Trumpington	Thu 10 March 2016	17.00-20.00	Trumpington Village Hall, 75 High Street, Trumpington CB2 9HZ

How are Transport Schemes Evaluated?



What are “business cases”?

- Need to demonstrate value for public money
- Cost (money and other negative impacts versus benefits e.g. safety, journey time saving etc.,)
- 2 levels of detail.....
- Stage 1 Outline business cases – to compare different options (this is what we are doing now)
- Stage 2 Full business case – to ultimately determine if the Preferred Option is VfM

Costs and benefits



Benefits of business cases

- An agreed and standardised way of prioritising public investment
- Removes subjectivity from process
- Transparent process – publically available guidelines
- Focuses minds on a coherent scheme as a whole rather than lots of small expedient interventions

Summary Next Steps

- Local Liaison Forum - March 2016
- Consultation results - Summer 2016
- City Deal Board – Sept 2016
- Recommended Option - Dec 2016
- Further consultation on detailed proposals
2017

City.deal@cambridgeshire.gov.uk

<http://www.cambridgeshire.gov.uk/citydeal/>



The Greater Cambridge City Deal
working in partnership:

