

M

MOTT
MACDONALD

M



A1307 Cambridge South East Transport Study

Local Liaison Forum 12th September 2018

Greater Cambridge Partnership



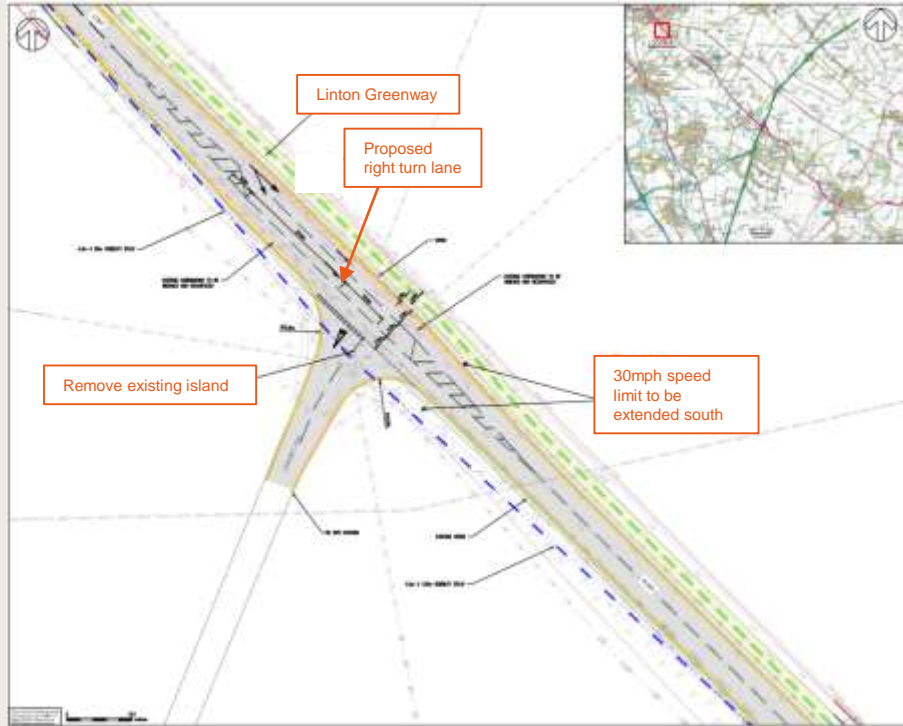
General Progress – Phase 1 scheme design development

- Current work on scheme design
 - Review of previous work
 - 2018 consultation comments
 - Value Engineering workshop
 - Discussions with key stakeholders
- Surveys
- Programming of works



Image source: https://www.greatercambridge.org.uk/transport/transport-projects/cambridge_south_east_study/

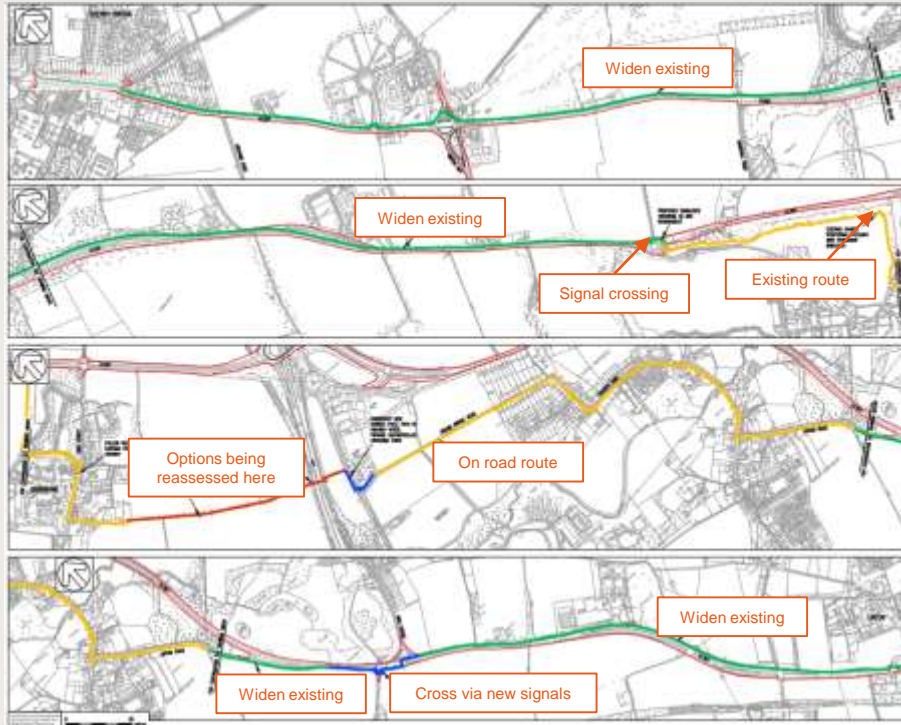
Scheme 1 – Granham's Road junction



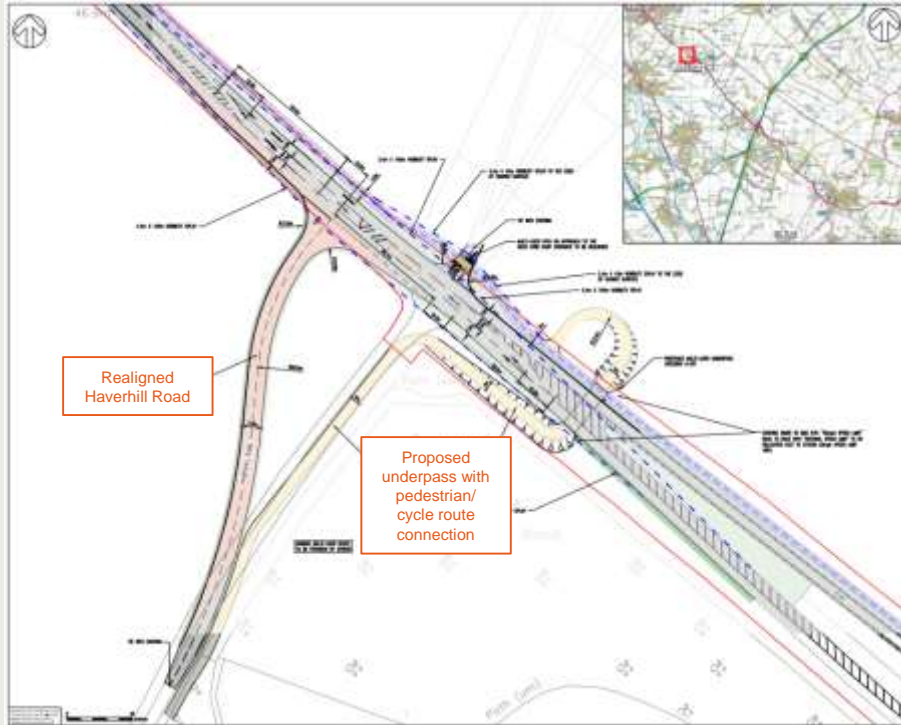
Scheme 2 – Babraham P&R Additional Cycle Parking



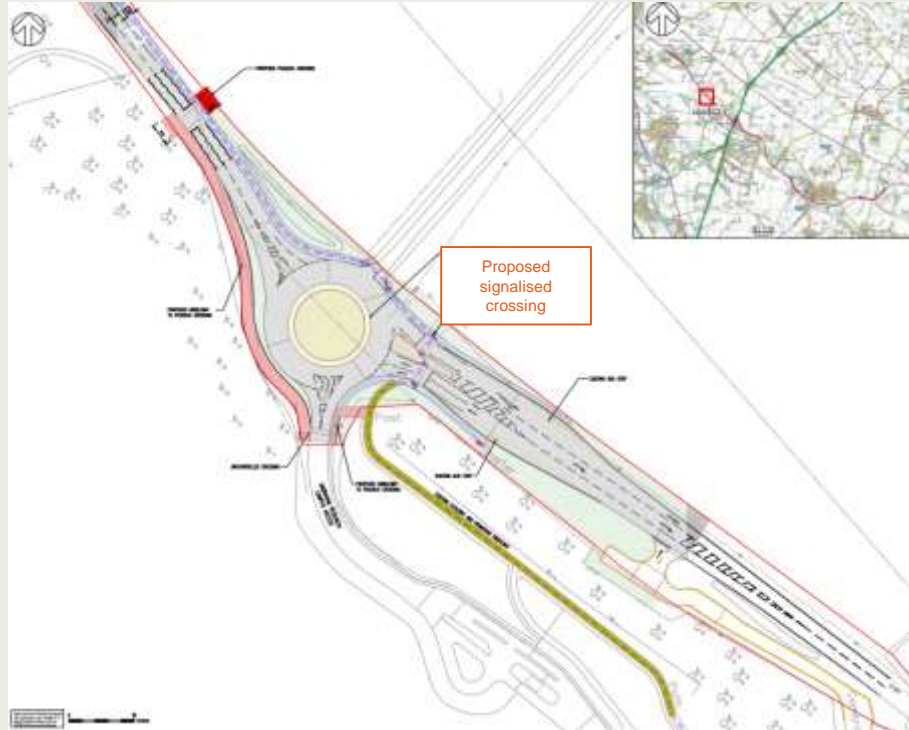
Scheme 3 – Linton Greenway



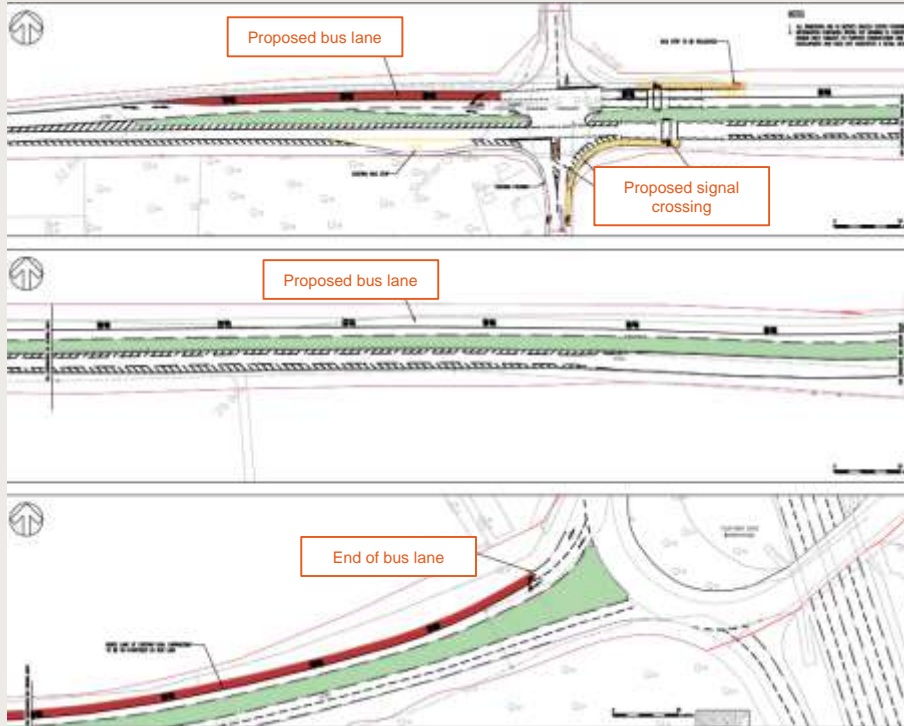
Scheme 4/5 – Haverhill Road/ Wandlebury Underpass



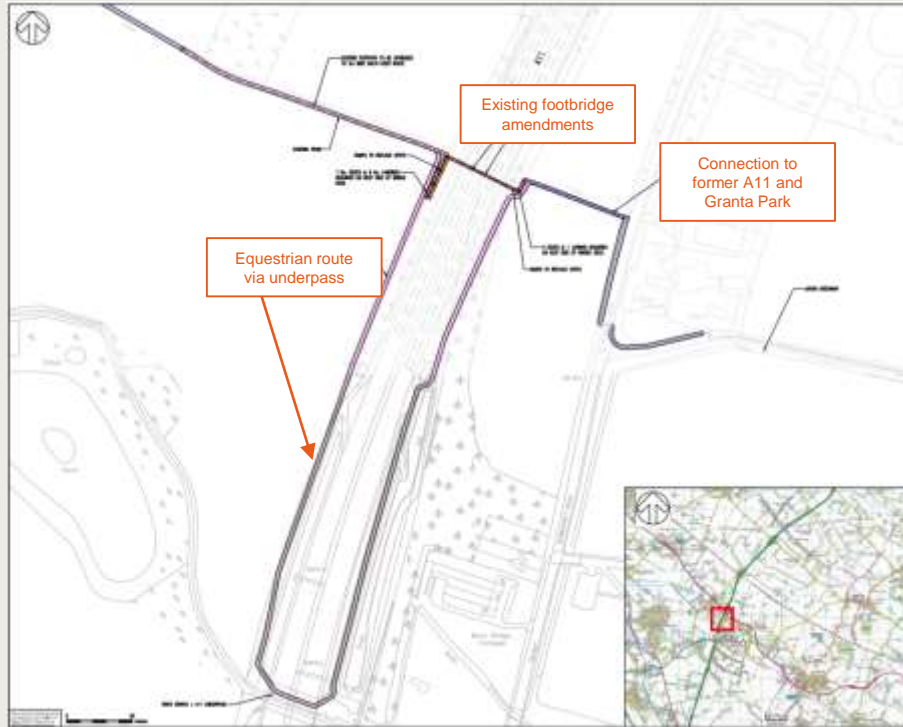
Scheme 6 – Babraham Research Campus Roundabout



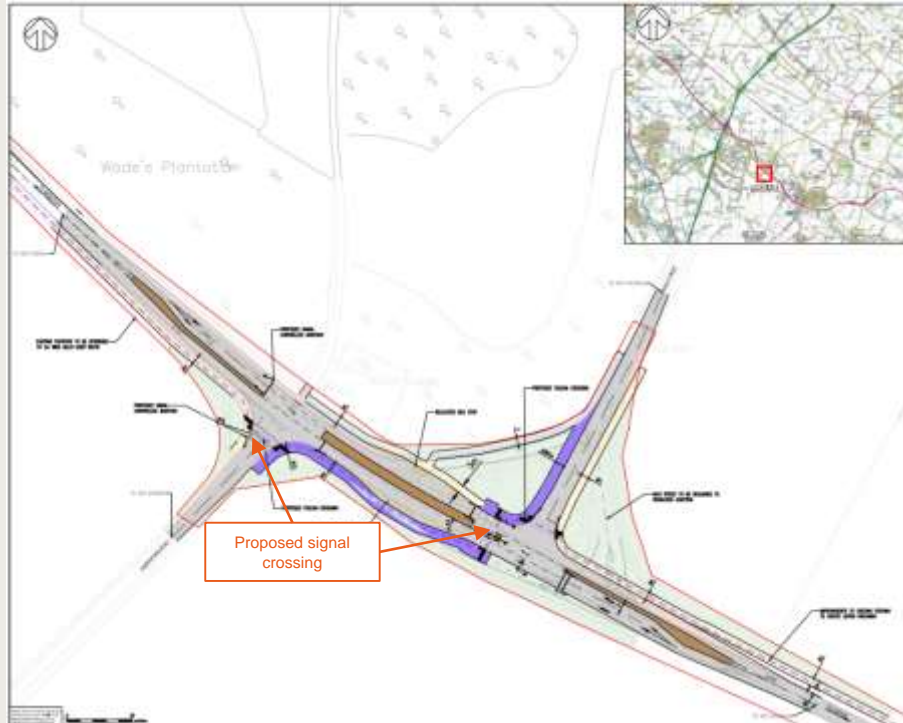
Scheme 7 – Eastbound Bus Lane near A11/ High Street, Babraham



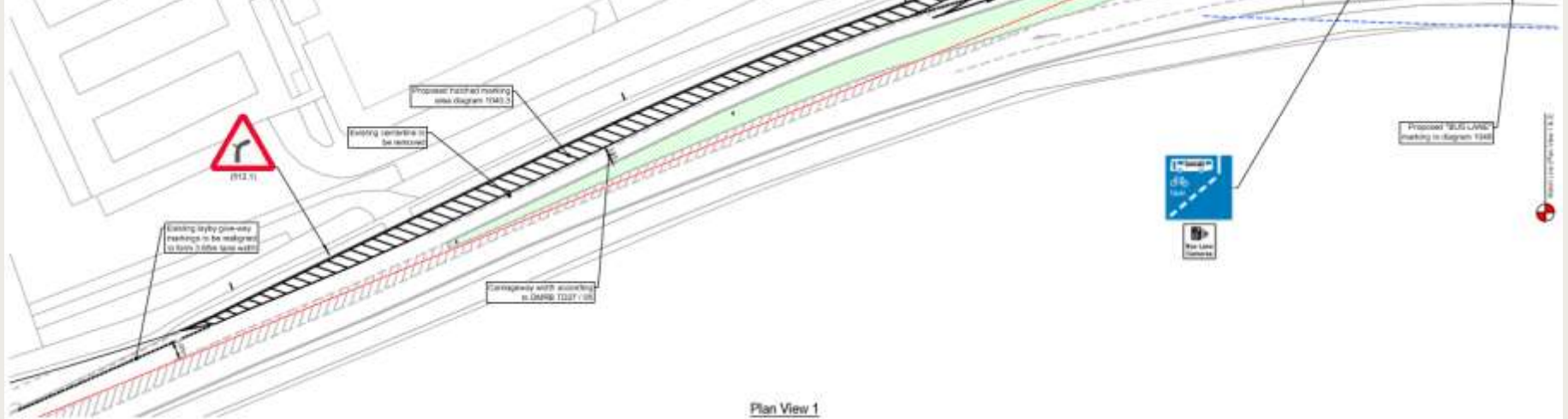
Scheme 8 – A11 Multi-user Crossing



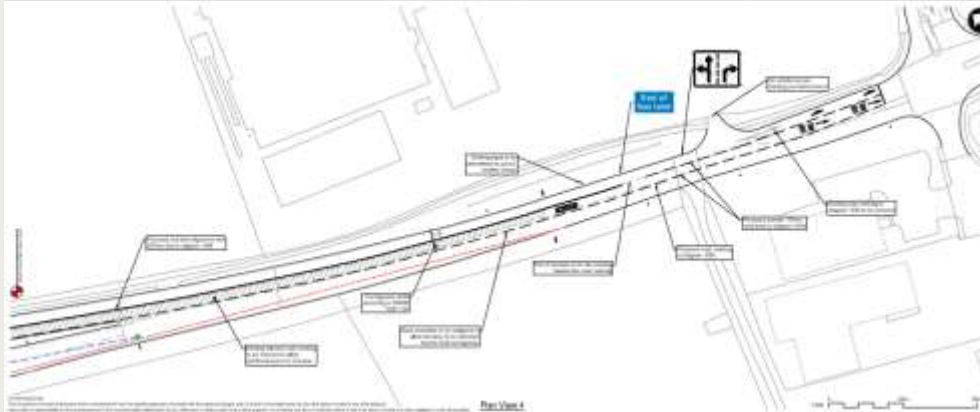
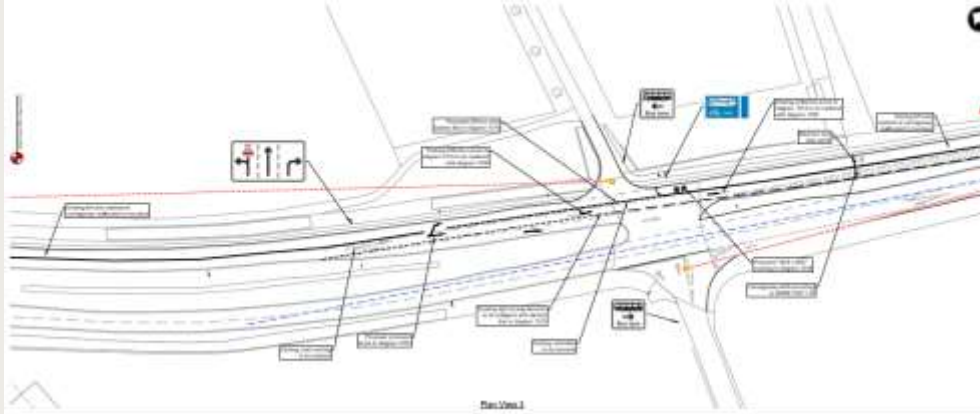
Scheme 9 – Hildersham Crossroads



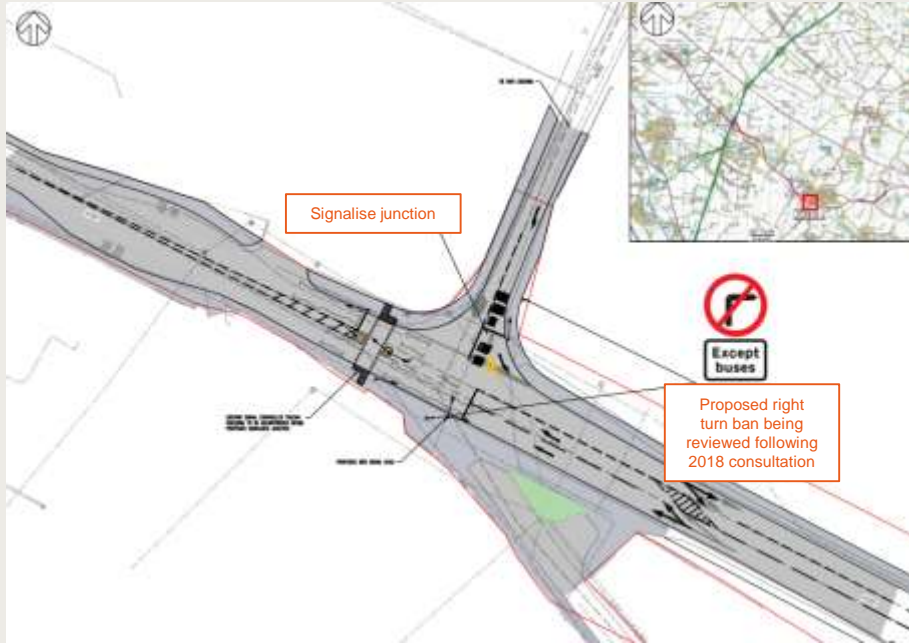
Scheme 10/11 (Interim) – Dalehead Foods Access



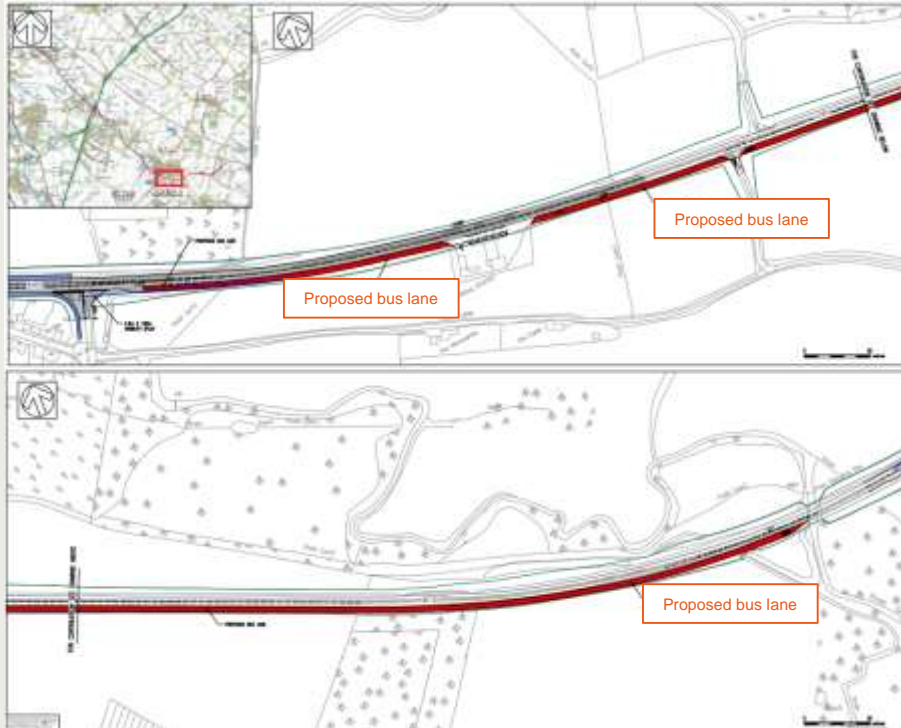
Scheme 10/11 – Dalehead Foods to Linton Village College



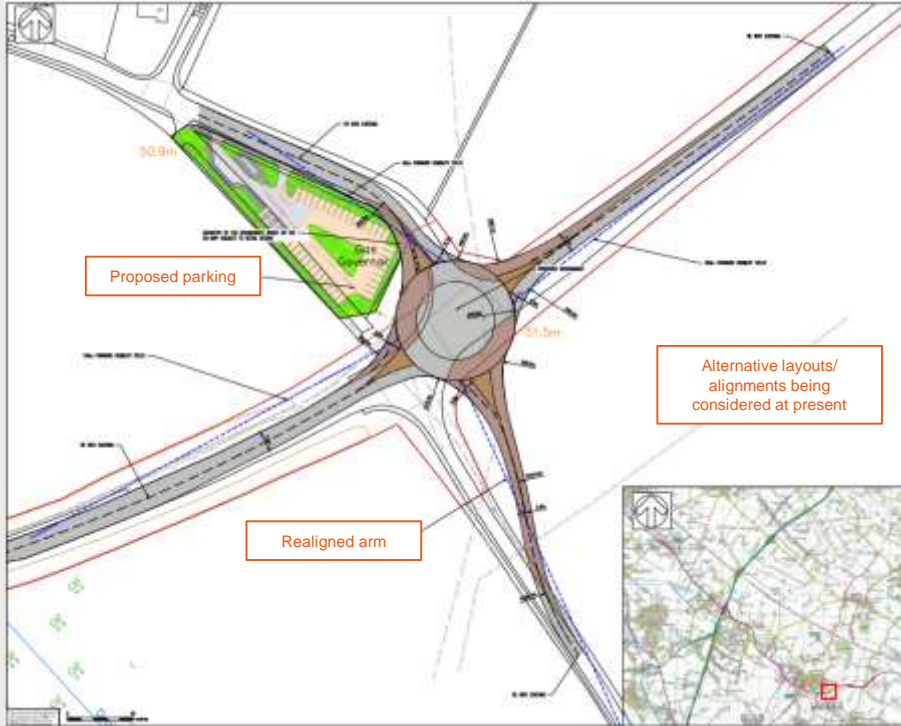
Scheme 12 – Linton High Street



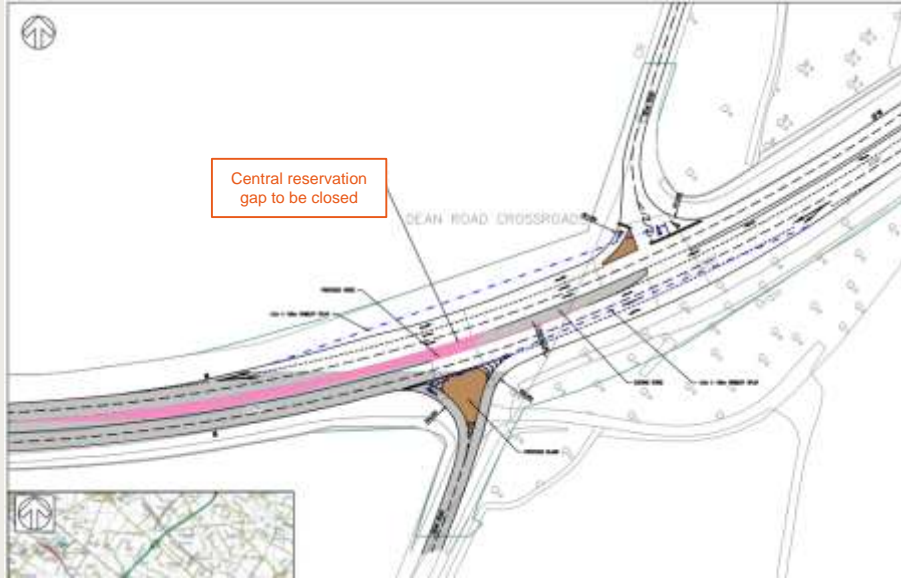
Scheme 13/14 – Linton Bus Improvements/ Westbound Bus Lane



Scheme 15 – Linton Rural Hub



Scheme 16/17 – Dean Road Crossroads/ Linton to Horseheath



Next stages

- Scheme design development
- Refining overall programme to develop scheme-specific programmes
- Tranche 1 schemes delivery
- Tranche 2 and Tranche 3 scheme development
- Phase 2 development, including interface with Phase 1 and other schemes/ emerging development proposals

